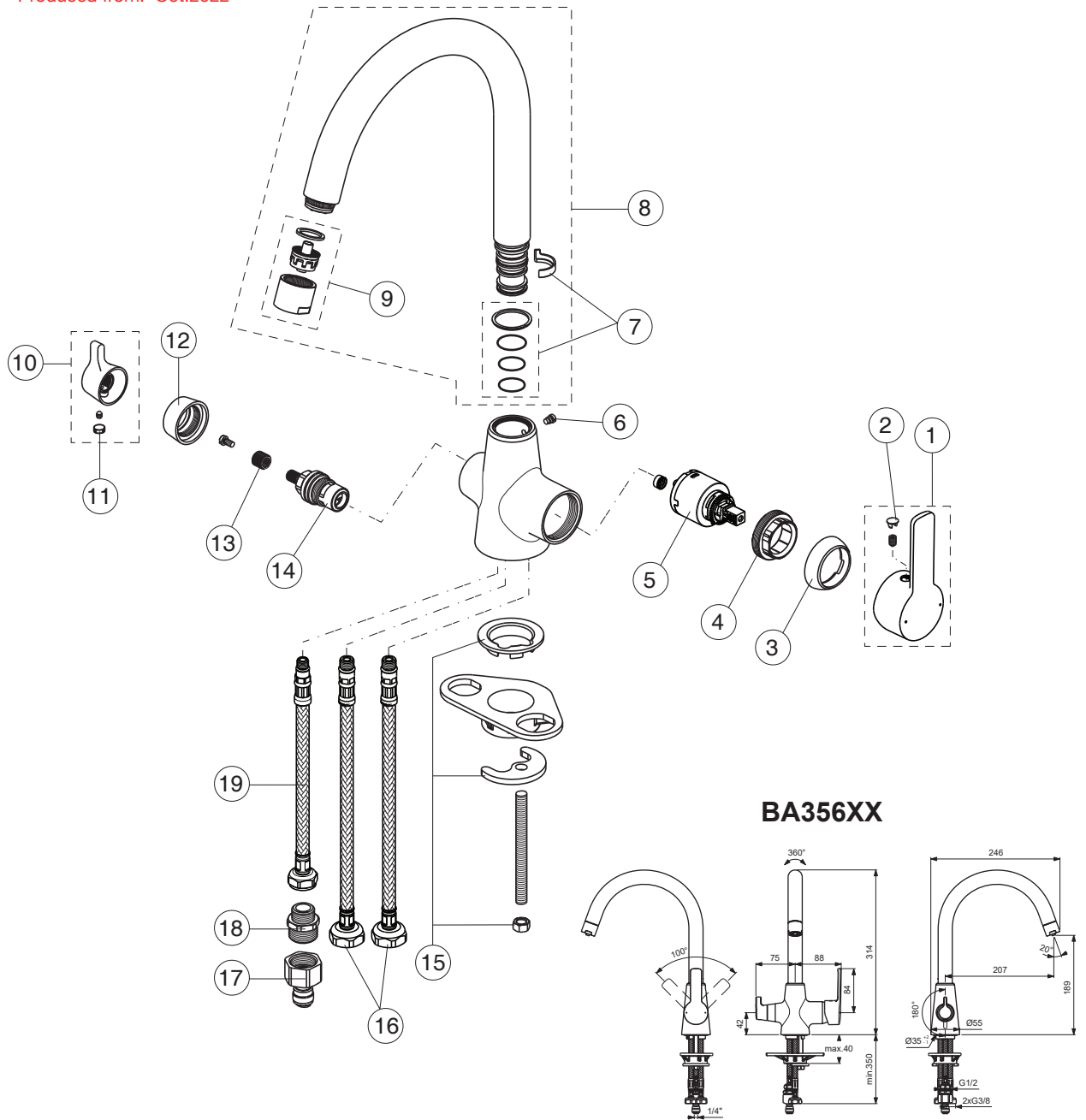


Produced from: Oct.2022



For XX=Coverage-Designate:

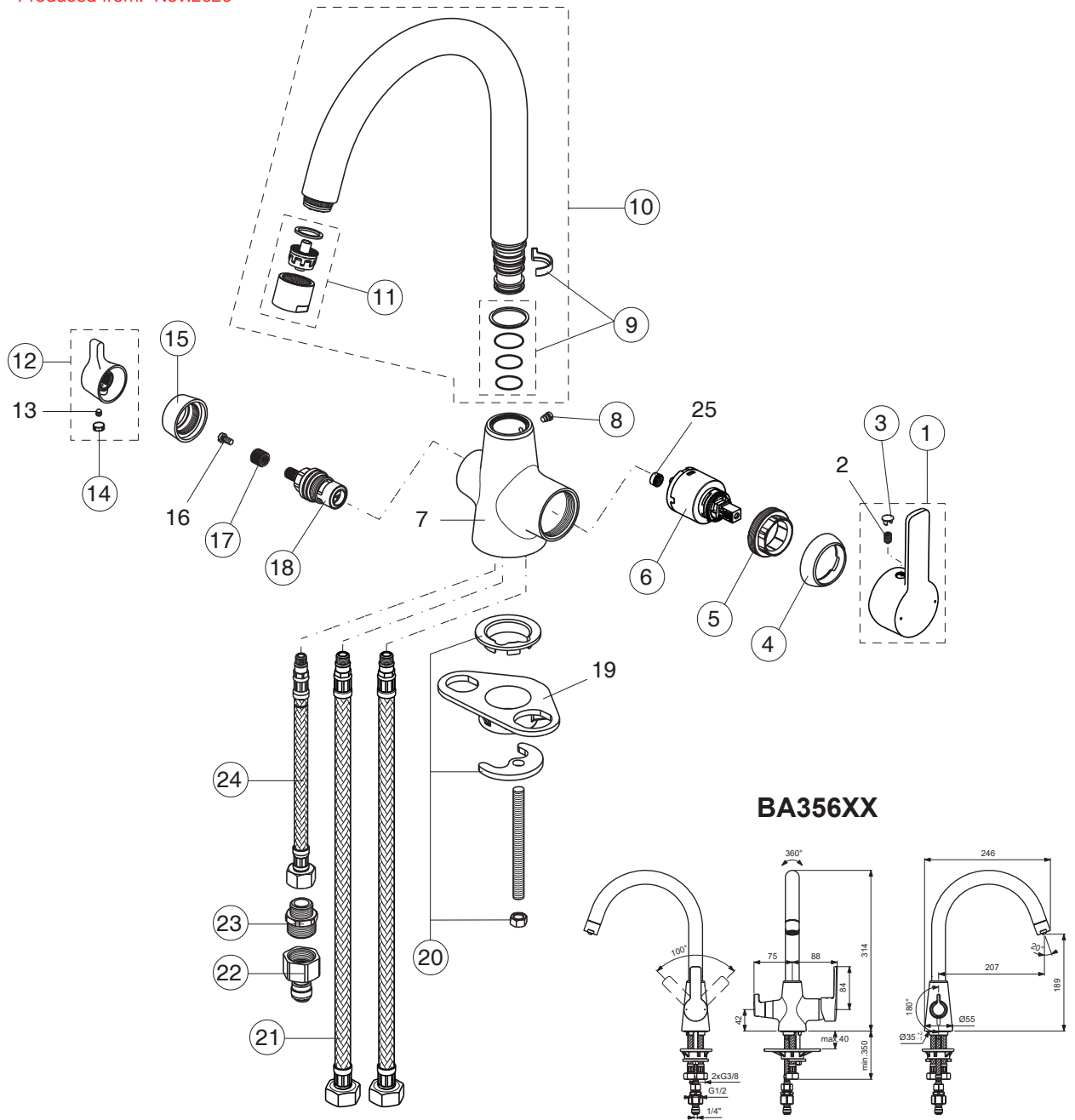
AA=chrome, OX=chrome/black pearl
XG=silk black

For Instance:

B961234AA for chrome

| Pos. | Signify | Spare parts-Nr. | Quantity | Pos. | Signify | Spare parts-Nr. | Quantity |
|------|---------------------------|-----------------|----------|------|----------------------------|-----------------|----------|
| 1 | Lever, w/logo-compl. | B961234XX | 1 Pcs. | 15 | Fixation kit | B964894NU | 1 Set |
| 2 | Cap decorative | B960473AA | 1 Pcs. | 16 | Flex hose G1/2-L400mm | B964562AA | 1 Pcs. |
| 3 | Cap | B964697XX | 1 Pcs. | 17 | Adapter 1/4"xG1/2 | B961366NU | 1 Pcs. |
| 4 | Screw M37x1.5 | B964698NU | 1 Pcs. | 18 | Nipple G3/8-G1/2 | B961365NU | 1 Pcs. |
| 5 | Cartridge Ø35mm | B961477NU | 1 Pcs. | 19 | Flex hose G3/8-M8x1-L500mm | B960221NU | 1 Pcs. |
| 6 | Screw M5x5.5 | B960273NU | 1 Pcs. | | | | |
| 7 | Sealing set | B961361NU | 1 Pcs. | | | | |
| 8 | Tub.spout R200-compl. | B961363XX | 1 Pcs. | | | | |
| 9 | Aerator flow M22x1 | B961362XX | 1 Pcs. | | | | |
| 10 | Diverter handle | B961283XX | 1 Pcs. | | | | |
| 11 | Rubber cap Ø8.1x3 | B960583NU | 1 Pcs. | | | | |
| 12 | Rosette M24x1 | B961364XX | 1 Pcs. | | | | |
| 13 | Insert | B961326NU | 1 Pcs. | | | | |
| 14 | Ceramic valve, G1/2, 180° | B960350NU | 1 Pcs. | | | | |

Produced from: Nov.2020



BA356XX

For XX=Coverage-Designate:

AA=chrome, OX=chrome/black pearl
XG=silk black

For Instance:

B961234AA for chrome

| Pos. | Signify | Spare parts-Nr. | Quantity | Pos. | Signify | Spare parts-Nr. | Quantity |
|------|-----------------------|-----------------|----------|------|------------------------------------|-----------------|----------|
| 1 | Lever, w/logo-compl. | B961234XX | 1 Pcs. | 15 | Rosette M24x1 | B961364XX | 1 Pcs. |
| 2 | Screw M5x8 | | 1 Pcs. | 16 | Screw M4x8 | | 1 Pcs. |
| 3 | Cap decorative | B960473AA | 1 Pcs. | 17 | Insert | B961326NU | 1 Pcs. |
| 4 | Cap | B964697XX | 1 Pcs. | 18 | Ceramic valve, G1/2, 180° | B960350NU | 1 Pcs. |
| 5 | Screw M37x1.5 | B964698NU | 1 Pcs. | 19 | U plate support bracket fixing kit | | 1 Pcs. |
| 6 | Cartridge Ø35mm | B961477NU | 1 Pcs. | 20 | Fixation kit | B964894NU | 1 Set |
| 7 | Body kitchen | | 1 Pcs. | 21 | Flex hose G1/2 M10x1/8x12/L400 | B960413NU | 1 Pcs. |
| 8 | Screw M5x5.5 | B960273NU | 1 Pcs. | 22 | Adapter 1/4"xG1/2 | B961366NU | 1 Pcs. |
| 9 | Sealing set | B961361NU | 1 Pcs. | 23 | Nipple G3/8-G1/2 | B961365NU | 1 Pcs. |
| 10 | Tub.spout R200-compl. | B961363XX | 1 Pcs. | 24 | Flex hose G3/8-M8x1/Ø4.7/11.5/L425 | A962370NU | 1 Pcs. |
| 11 | Aerator flow M22x1 | B961362XX | 1 Pcs. | 25 | Flow limiter - 9 l/min | | 1 Pcs. |
| 12 | Diverter handle | B961283XX | 1 Pcs. | | | | |
| 13 | Screw M4x5 | | 1 Pcs. | | | | |
| 14 | Rubber cap Ø8.1x3 | B960583NU | 1 Pcs. | | | | |